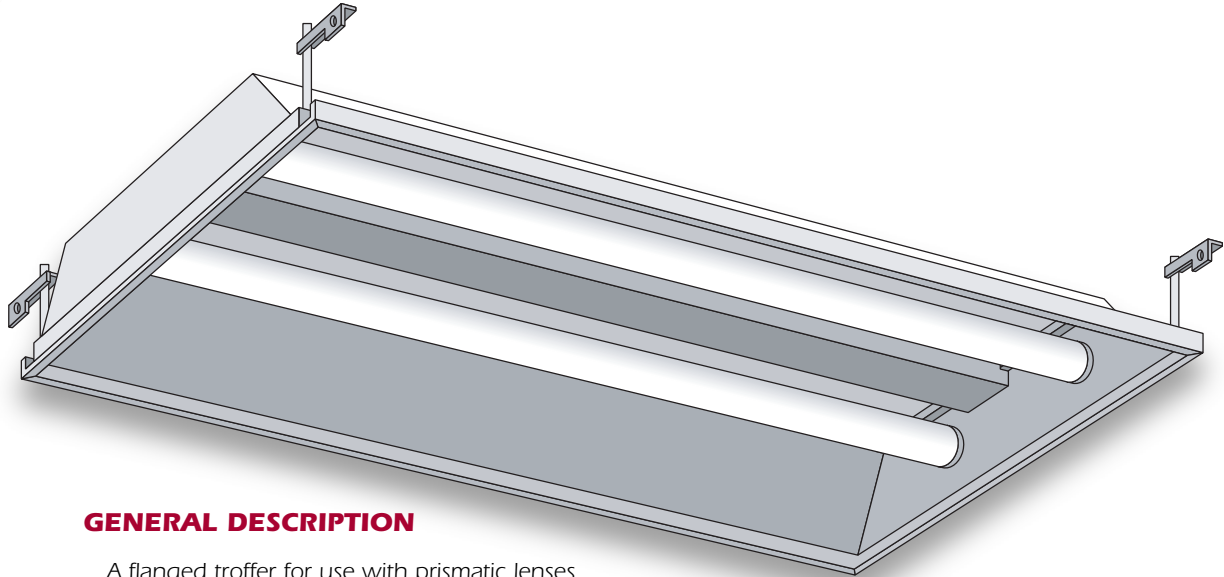




# LIGHTING FIXTURE MFG.

## 2x4 Flange



### GENERAL DESCRIPTION

A flanged troffer for use with prismatic lenses or celled louvers in concealed Z-bar ceilings. The body is the same shape for 2x2 and 2x4.

### SPECIFICATIONS

**Housing:** 3- 3/4" deep. Die-formed standard or 20-gauge steel with rounded side flanges for safe handling. Embossed for maximum rigidity. Four corner tie points for safety wire supports.

**Ends:** Snap into housing and can be additionally secured with a #8" x 3/8" screw or 1/8" pop rivet with 1/2" to 3/16" grip (not included).

**End Trim:** Extends over the ends and snaps into side flanges on housing.

**Joiner:** Connect and aligns ends of housing in continuous runs. Joiner overlaps ends and is mounted by bending tabs.

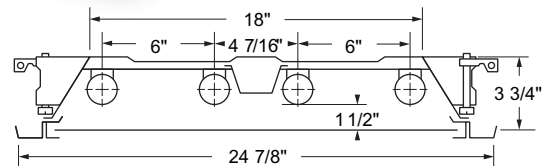
**Socket Plate:** Snap-in type. Available in 2, 3, 4 and U-lamp. Four-light and U-lamp use the same plate. Sockets are tilted forward to provide positive spring action contact with lamps. Same socket plates fit 2 x 2 and 2 x 4.

**Ballast Cover:** Snaps in without tools for easy installation.

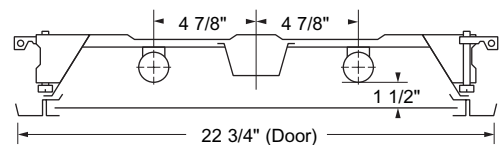
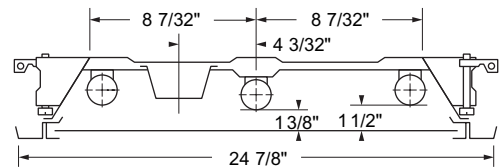
**Access Plate:** Snaps in for simple ballast lead hook-up without removing door or ballast cover.

### NOTES

Dimensions subject to change without notice.



4-lamp model for use with T8 lamps only



**Door Frame:** Available in flush steel. Hinges on end from either side of housing and is secured by a rotary cam latch (sold separately). See separate listing for door specifications.

**Leveling Lug Assembly:** Leveling lugs (4 included) attach to each corner of body to fasten housing to concealed Z-bar ceilings.

**Finish:** White polyester polymer with a minimum of 82% reflectivity.

**Diffusers (not included):** Prismatic lenses and all types of louvers will easily fit door frame. See separate listing on door specifications.

Catalog No.	Lamps	Voltage	Bulb	Type
LIF24-232	2 T8	120V-277V	F32	Plain
LIF24-232LW	2 T8	120V-277V	F32	Lamp-Whip
LIF24-232LW-DL	2 T8 (750)	120V-277V	F32	Lamp-Whip
LIF24-332	3 T8	120V-277V	F32	Plain
LIF24-332LW	3 T8	120V-277V	F32	Lamp-Whip
LIF24-332LW-DL	3 T8 (750)	120V-277V	F32	Lamp-Whip
LIF24-432	4 T8	120V-277V	F32	Plain
LIF24-432LW	4 T8	120V-277V	F32	Lamp-Whip
LIF24-432LW-DL	4 T8 (750)	120V-277V	F32	Lamp-Whip
LIF24-432LW-EMG	4 T8 (Emergency)	120V-277V	F32	Lamp-Whip
LIF24-432LW-DL-EMG	4 T8 (750) (Emergency)	120V-277V	F32	Lamp-Whip