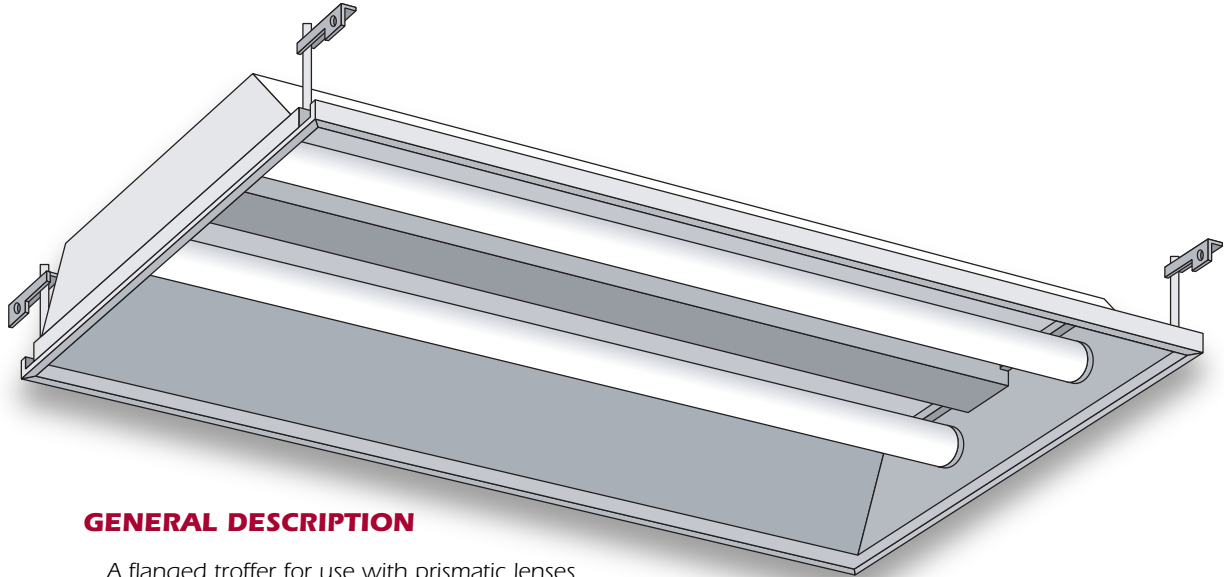




LIGHTING FIXTURE MFG.

2x4 Flange



GENERAL DESCRIPTION

A flanged troffer for use with prismatic lenses or celled louvers in concealed Z-bar ceilings. The body is the same shape for 2x2 and 2x4.

SPECIFICATIONS

Housing: 3- 3/4" deep. Die-formed standard or 20-gauge steel with rounded side flanges for safe handling. Embossed for maximum rigidity. Four corner tie points for safety wire supports.

Ends: Snap into housing and can be additionally secured with a #8" x 3/8" screw or 1/8" pop rivet with 1/2" to 3/16" grip (not included).

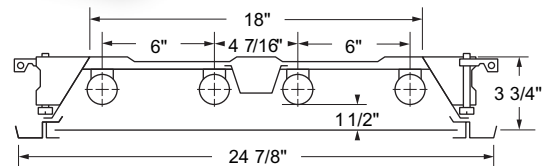
End Trim: Extends over the ends and snaps into side flanges on housing.

Joiner: Connect and aligns ends of housing in continuous runs. Joiner overlaps ends and is mounted by bending tabs.

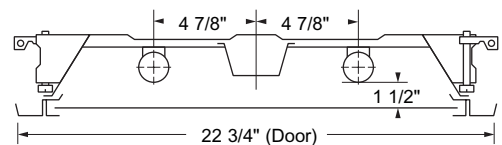
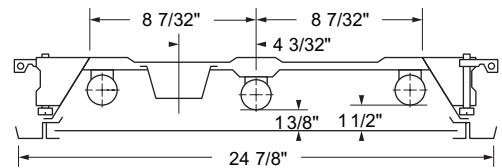
Socket Plate: Snap-in type. Available in 2, 3, 4 and U-lamp. Four-light and U-lamp use the same plate. Sockets are tilted forward to provide positive spring action contact with lamps. Same socket plates fit 2 x 2 and 2 x 4.

Ballast Cover: Snaps in without tools for easy installation.

Access Plate: Snaps in for simple ballast lead hook-up without removing door or ballast cover.



4-lamp model for use with T8 lamps only



Door Frame: Available in flush steel. Hinges on end from either side of housing and is secured by a rotary cam latch (sold separately). See separate listing for door specifications.

Leveling Lug Assembly: Leveling lugs (4 included) attach to each corner of body to fasten housing to concealed Z-bar ceilings.

Finish: White polyester polymer with a minimum of 82% reflectivity.

Diffusers (not included): Prismatic lenses and all types of louvers will easily fit door frame. See separate listing on door specifications.

NOTES

Dimensions subject to change without notice.

Catalog No.	Lamps	Voltage	Bulb	Type
LIF24-240	2 T12	120V	F34	Plain
LIF24-240-277	2 T12	277V	F34	Plain
LIF24-240LW	2 T12	120V	F34	Lamp-Whip
LIF24-240LW-277	2 T12	277V	F34	Lamp-Whip
LIF24-340	3 T12	120V	F34	Plain
LIF24-340LW	3 T12	120V	F34	Lamp-Whip
LIF24-440	4 T12	120V	F34	Plain
LIF24-440-277	4 T12	277V	F34	Plain
LIF24-440LW	4 T12	120V	F34	Lamp-Whip
LIF24-440LW-277	4 T12	277V	F34	Lamp-Whip
LIF24-440LW-DL	4 T12 (Daylite)	120V	F40	Lamp-Whip
LIF24-440LW-277	4 T12 (Daylite)	277V	F40	Lamp-Whip
LIF24-440LW-EMG	4 T12 (Emergency)	120V	F34	Lamp-Whip
LIF24-440LW-277-EMG	4 T12 (Emergency)	277V	F34	Lamp-Whip
LIF24-440LW-DL-EMG	4 T12 (Daylite) (Emergency)	277V	F40	Lamp-Whip