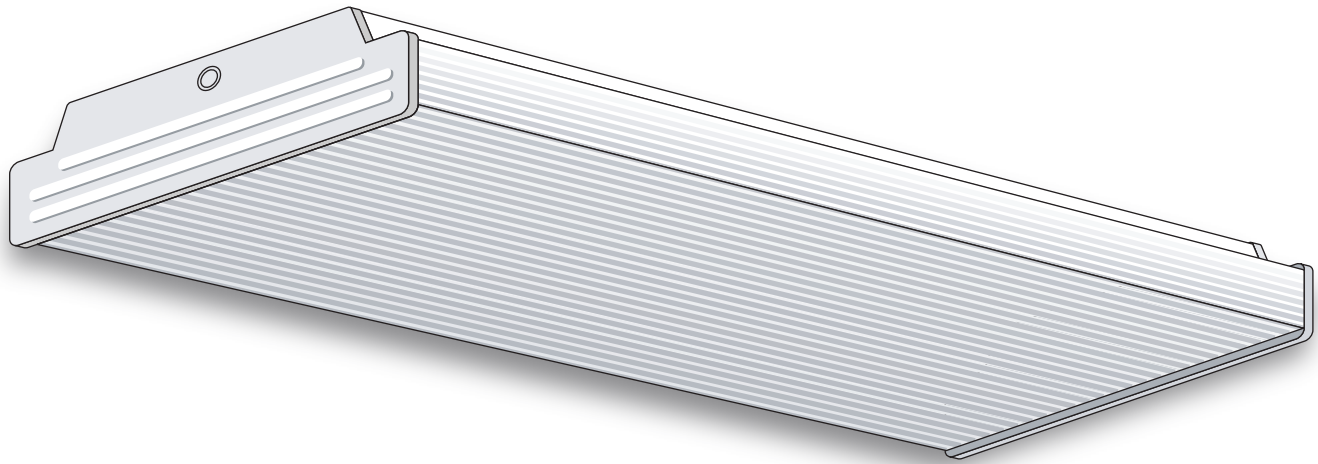




LIGHTING FIXTURE MFG.

Wraparound



GENERAL DESCRIPTION

A low-profile 2- or 4-lamp wraparound for use with one-piece prismatic lenses.

SPECIFICATIONS

Housing: Die-formed heavy-gauge steel with side flanges for extra uniformity and rigidity.

Ballast Cover: Snaps into housing to cover ballast and wires.

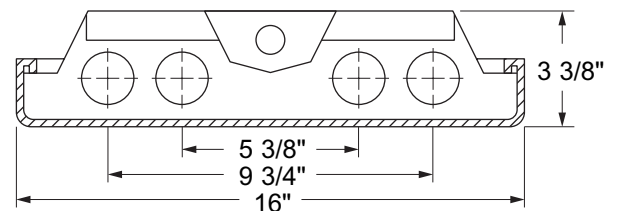
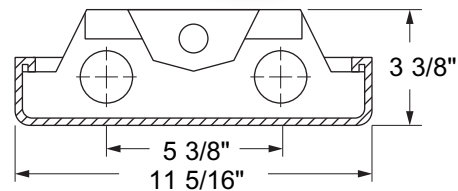
Socket Plates: Slide on, for easy wiring.

Ends: Embossed for rigidity. Can be ordered with cut down ends for reverse-form puffs.

Finish: White polyester polymer with a minimum of 82% reflectivity.

Diffuser (not included): Fixture is designed for one-piece prismatic lenses. Diffusers snap on for easy servicing and hinge from either side. 6' and 8' units require two individual diffusers joined with a plastic strap.

Mounting: Units may be surface or stem mounted, individually or in continuous rows.



NOTES

Dimensions subject to change without notice.

300 Wrap-A-Round	F-WA (T-12)				
Catalog No.	Lamps	Voltage	Length	Width	Type
F-WA220	2 T12	120V	24"	11"	Bi-Pin
F-WA240	2 T12	120V	48"	11"	Bi-Pin
F-WA240-277	2 T12	277V	48"	11"	Bi-Pin
F-WA240-EMG	2 T12 (Emergency)	120V-277V	48"	11"	Bi-Pin
F-WA296	2 T12	120V	96"	11"	Slimline
F-WA296-277	2 T12	277V	96"	11"	Slimline
F-WA2240	4 T12 (Tandem)	120V	96"	11"	Bi-Pin
F-WA2240-277	4 T12 (Tandem)	277V	96"	11"	Bi-Pin
F-WA420	4 T12	120V	24"	15-1/2"	Bi-Pin
F-WA440	4 T12	120V	48"	15-1/2"	Bi-Pin
F-WA440-277	4 T12	277V	48"	15-1/2"	Bi-Pin
F-WA440-EMG	4 T12 (Emergency)	120V-277V	48"	15-1/2"	Bi-Pin
F-WA496	4 T12	120V	96"	15-1/2"	Slimline
F-WA496-277	4 T12	277V	96"	15-1/2"	Slimline