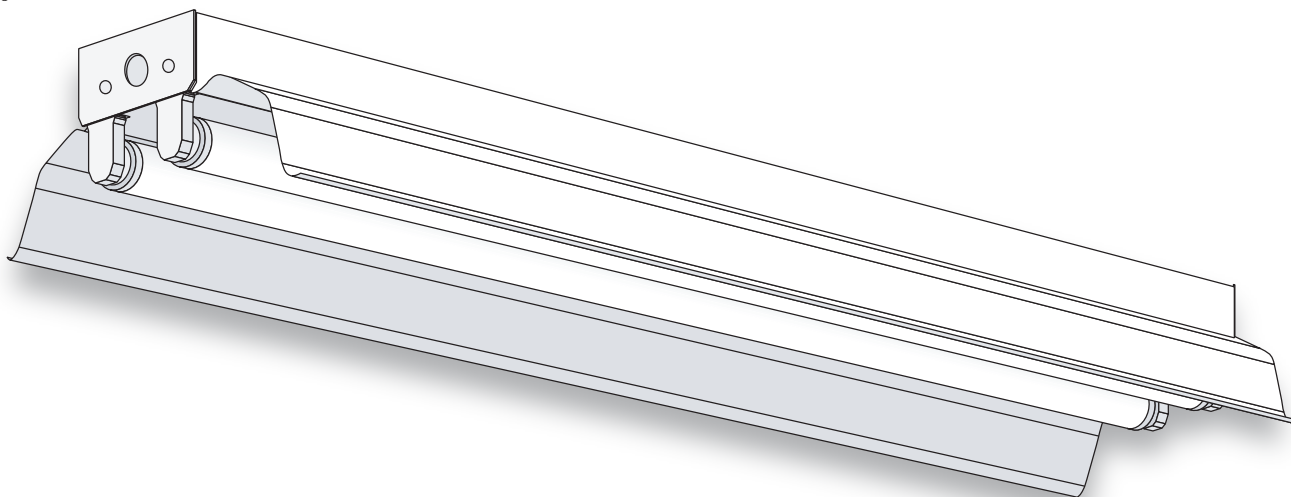




LIGHTING FIXTURE MFG.

Industrial



GENERAL DESCRIPTION

A high quality all-purpose economy Industrial with symmetrical reflector. All fixture parts snap together for ease of installation and maintenance. Side knockouts are included for a convenience outlet, a pull switch and conduit. Sides and back have knockouts for chain hangers.

SPECIFICATIONS

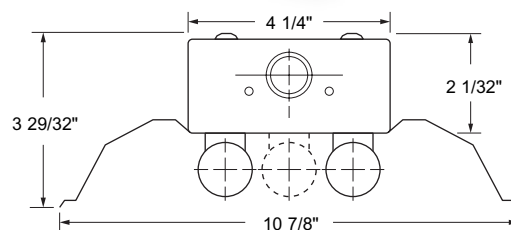
Housing: Die-formed heavy-gauge cold rolled steel with side knockouts for a convenience outlet, a pull switch and conduit. Sides and back have knockouts for chain hanger.

Reflector: One end of reflector slides into socket plate and the other end is held on by a cam-lock (not included). Fabricated in two sections for 72" and 96" bodies to simplify installation. Aligners available for tandem configurations and continuous runs.

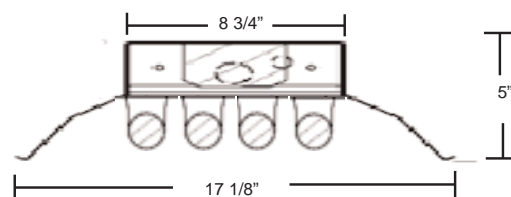
Ends and Socket Plates: Snap-in type. Ends also function as couplers for continuous runs.

Finish: White polyester polymer with a minimum of 82% reflectivity.

Mounting: Designed for surface, stem or chain hanging. Can be installed as individual units or in continuous rows.



3 & 4 Light



NOTES

Dimensions subject to change without notice.

Catalog No.	Lamps	Voltage	Length	Type
F-I132	1 T8	120V-277V	48"	Bi-pin Shunted
F-I232	2 T8	120V-277V	48"	Bi-pin Shunted
F-I2132	2 T8 (Tandem)	120V-277V	96"	Bi-pin Shunted
F-I196T8	1 T8	120V-277V	96"	Slimline
F-I2232	4 T8 (Tandem)	120V-277V	96"	Bi-pin Shunted
F-I296T8	2 T8	120V-277V	96"	Slimline
F-I296T8HO	2 T8 HO	120V	96"	HO
F-I296T8HO-277	2 T8 HO	277V	96"	HO
F-I496T8	4 T8	120V	96"	Slimline
F-I496T8HO	4 T8	120V	96"	HO
F-I496T8HO-277	4 T8	277V	96"	HO