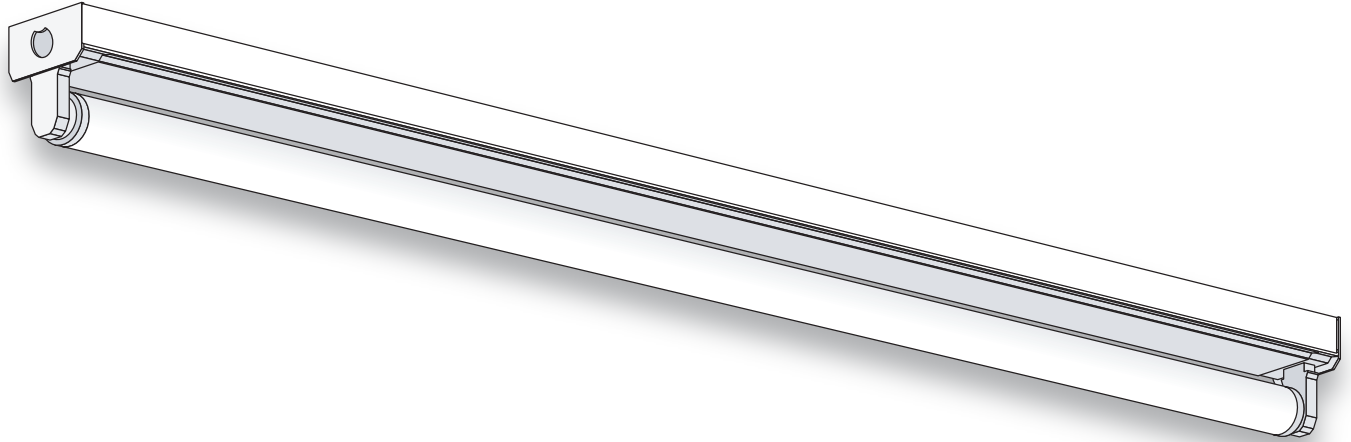




# LIGHTING FIXTURE MFG.

## 1-Light Strip



### GENERAL DESCRIPTION

An all-purpose 1-light fluorescent economy strip fixture suitable for a wide range of applications. All fixture parts snap together for ease of installation and maintenance. Side knockouts are included for a convenience outlet, a pull switch and conduit.

### SPECIFICATIONS

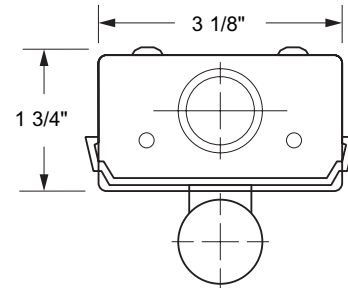
**Housing:** Die-formed heavy-gauge cold rolled steel.

**Cover:** Snap-on type to simplify installation. Two covers are used for 30-watt tandem and 40-watt tandems.

**Ends and Socket Plates:** Snap-in type. Ends also function as coupler for continuous row mounting. Socket plates accept slide-on or screw-down sockets.

**Finish:** White polyester polymer with a minimum of 82% reflectivity.

**Mounting:** Surface or pendant mount, individually or in continuous rows. Sufficient knockouts are provided.



### NOTES

Dimensions subject to change without notice.

Catalog No.	Lamps	Voltage	Length	Type
F-S117	1 T8	120V-277V	24"	Bi-pin Shunted
F-S125	1 T8	120V-277V	36"	Bi-pin Shunted
F-S132	1 T8	120V-277V	48"	Bi-pin Shunted
F-S2125	2 T8	120V-277V	72"	Bi-pin Shunted
F-S2132	2 T8	120V-277V	96"	Bi-pin Shunted