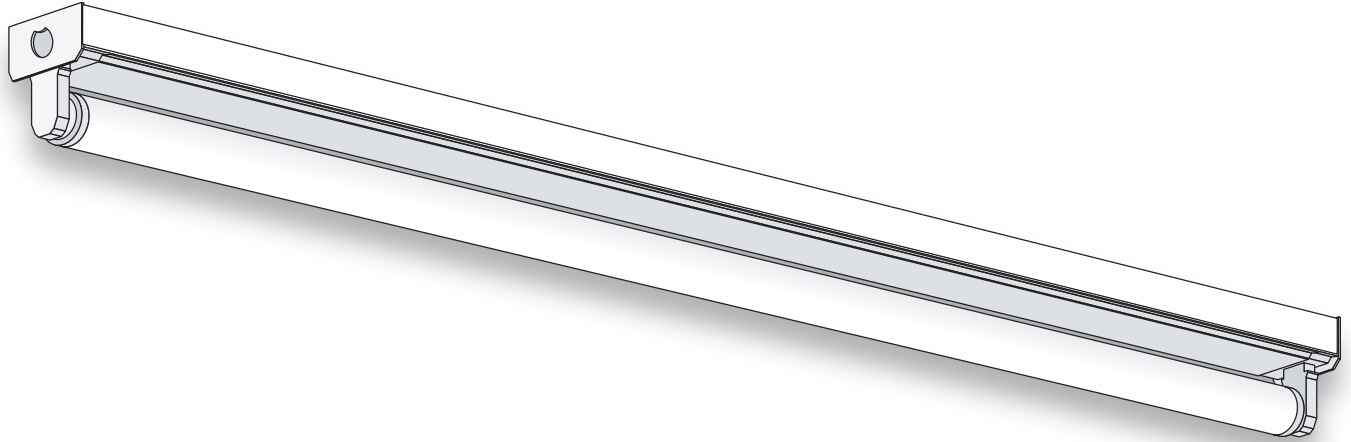




LIGHTING FIXTURE MFG.

1-Light Strip



GENERAL DESCRIPTION

An all-purpose 1-light fluorescent economy strip fixture suitable for a wide range of applications. All fixture parts snap together for ease of installation and maintenance. Side knockouts are included for a convenience outlet, a pull switch and conduit.

SPECIFICATIONS

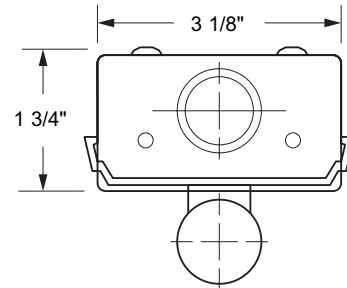
Housing: Die-formed heavy-gauge cold rolled steel.

Cover: Snap-on type to simplify installation. Two covers are used for 30-watt tandem and 40-watt tandems.

Ends and Socket Plates: Snap-in type. Ends also function as coupler for continuous row mounting. Socket plates accept slide-on or screw-down sockets.

Finish: White polyester polymer with a minimum of 82% reflectivity.

Mounting: Surface or pendant mount, individually or in continuous rows. Sufficient knockouts are provided.



NOTES

Dimensions subject to change without notice.

Catalog No.	Lamps	Voltage	Length	Type
F-S114	1 T12	120V	15"	Bi-pin
F-S115	1 T12	120V	18"	Bi-pin
F-S115PH	1 T12 (Pre-Heat)	120V	18"	Bi-pin
F-S120	1 T12	120V	24"	Bi-pin
F-S120PH	1 T12 (Pre-Heat)	120V	24"	Bi-pin
F-S130	1 T12	120V	36"	Bi-pin
F-S130PH	1 T12 (Pre-Heat)	120V	36"	Bi-pin
F-S140	1 T12	120V	48"	Bi-pin
F-S140PH	1 T12 (Pre-Heat)	120V	48"	Bi-pin
F-S2130	2 T12	120V	72"	Bi-pin
F-S2140	2 T12	120V	96"	Bi-pin