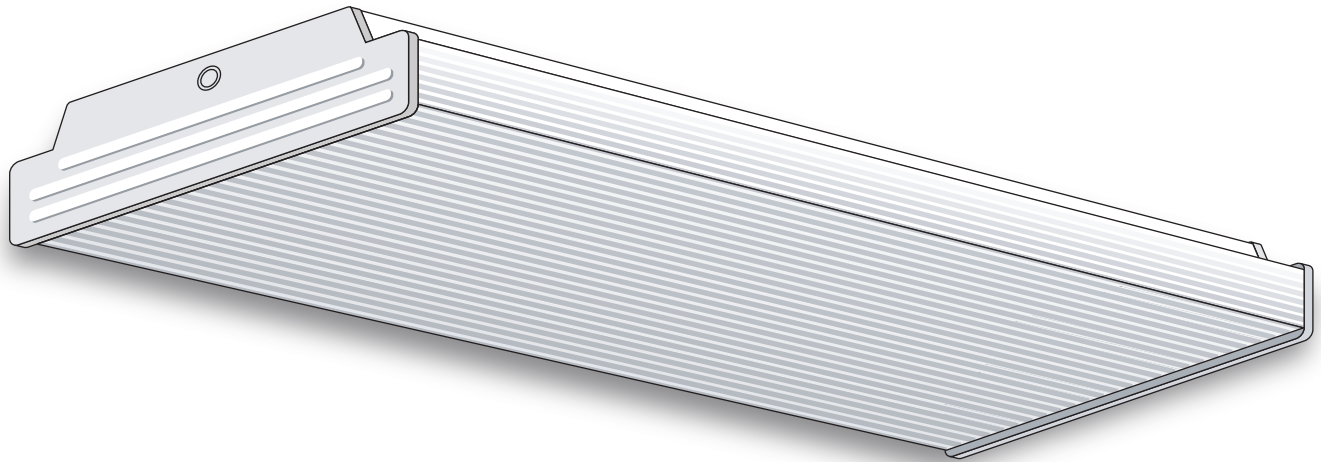




# LIGHTING FIXTURE MFG.

## Narrow Wraparound



### GENERAL DESCRIPTION

A low-profile, narrow, 2-light fluorescent wraparound. All fixture parts snap together for ease of installation and maintenance. Housing accepts lift-and-shift lenses and frames, as well as frames that fit flush to the ceiling.

### SPECIFICATIONS

**Housing:** Die-formed heavy-gauge steel. Side flanges add maximum rigidity.

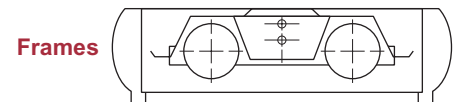
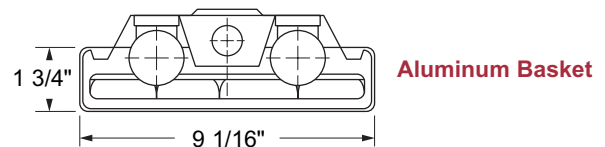
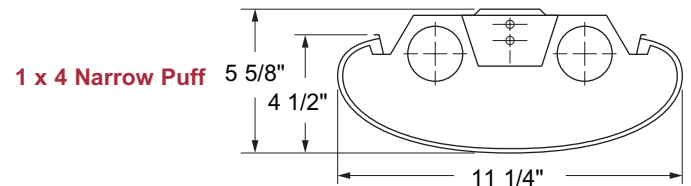
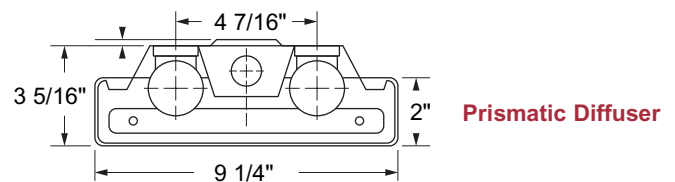
**Ends:** Snap-on tightly to the housing. Formed tabs hold two slide-on sockets. Ends can also be ordered cut down for reverse-form puffs and frames.

**Ballast Cover:** Snaps into housing to cover ballast and wires.

**Diffuser (not included):** Fixture accepts lift-and-shift prismatic lenses, reverse-form puffs and aluminum baskets. Frames can be screwed to cut-down ends on the body and flush mounted to the ceiling.

**Finish:** White polyester polymer with a minimum of 82% reflectivity.

**Mounting:** Units may be surface or stem mounted, individually or in continuous rows.



### NOTES

Dimensions subject to change without notice.

Catalog No.	Lamps	Voltage	Length	Width	Type
F-WA240N	2 T12	120V	48"	9"	Bi-Pin
F-WA240N-X	2 T12 (Import)	120V	48"	9"	Bi-Pin
F-WA240NRES	2 T12 (Residential)	120V	48"	9"	Bi-Pin
F-WA240N-EMG	2 T12 (Emergency)	120V	48"	9"	Bi-Pin