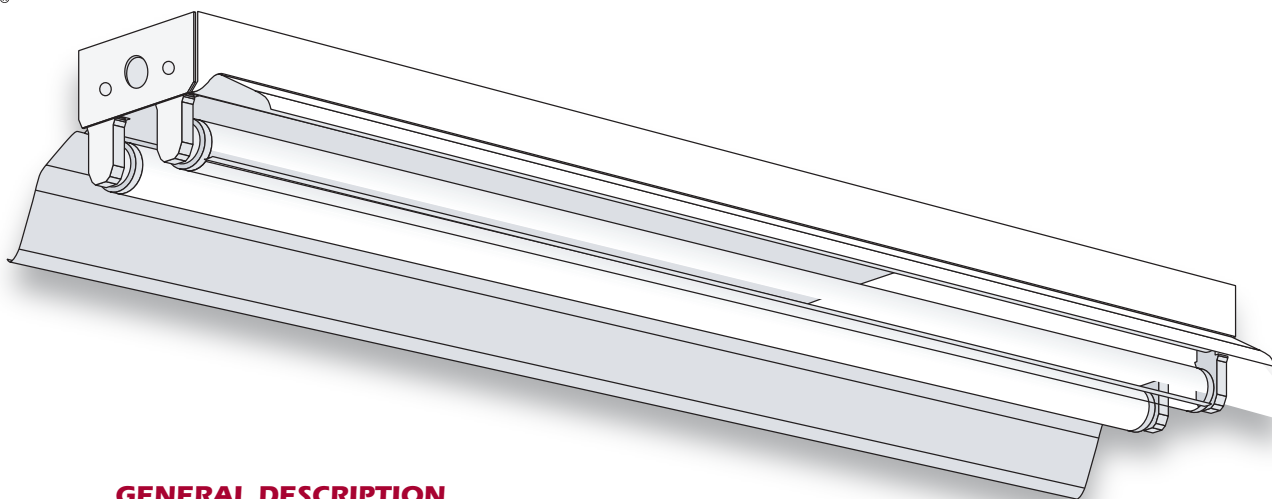




LIGHTING FIXTURE MFG.

Industrial



GENERAL DESCRIPTION

A high quality all-purpose economy Industrial with symmetrical reflector. All fixture parts snap together for ease of installation and maintenance. Side knockouts are included for a convenience outlet, a pull switch and conduit. Sides and back have knockouts for chain hangers.

SPECIFICATIONS

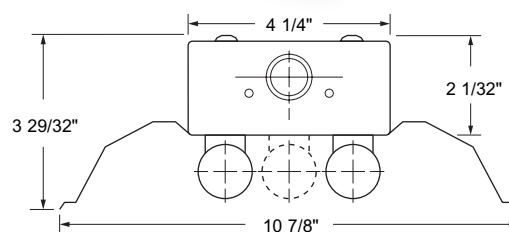
Housing: Die-formed heavy-gauge cold rolled steel with side knockouts for a convenience outlet, a pull switch and conduit. Sides and back have knockouts for chain hanger.

Reflector: One end of reflector slides into socket plate and the other end is held on by a cam-lock (not included). Fabricated in two sections for 72" and 96" bodies to simplify installation. Aligners available for tandem configurations and continuous runs.

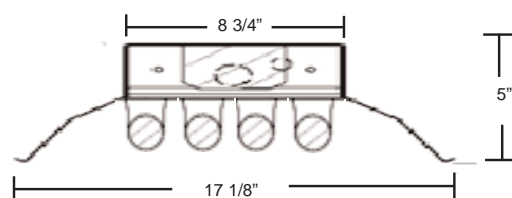
Ends and Socket Plates: Snap-in type. Ends also function as couplers for continuous runs.

Finish: White polyester polymer with a minimum of 82% reflectivity.

Mounting: Designed for surface, stem or chain hanging. Can be installed as individual units or in continuous rows.



3 & 4 Light



NOTES

Dimensions subject to change without notice.

| Catalog No. | Lamps | Voltage | Length | Type |
|---------------|----------------|-----------|--------|----------|
| F-I140 | 1 T12 | 120V | 48" | Bi-pin |
| F-I240 | 2 T12 | 120V | 48" | Bi-pin |
| F-I240-277 | 2 T12 | 277V | 48" | Bi-pin |
| F-I248HO | 2 T12 HO | 120V-277V | 48" | HO |
| F-I196 | 1 T12 | 120V | 96" | Slimline |
| F-I196-277 | 1 T12 | 277V | 96" | Slimline |
| F-I2140 | 2 T12 (Tandem) | 120V | 96" | Bi-pin |
| F-I2240 | 4 T12 (Tandem) | 120V | 96" | Bi-pin |
| F-I2240-277 | 4 T12 (Tandem) | 277V | 96" | Bi-pin |
| F-I296 | 2 T12 | 120V | 96" | Slimline |
| F-I296-277 | 2 T12 | 277V | 96" | Slimline |
| F-I296HO | 2 T12 HO | 120V-277V | 96" | HO |
| F-I296VHO | 2 T12 VHO | 120V | 96" | HO |
| F-I296VHO-277 | 2 T12 VHO | 277V | 96" | HO |
| F-I496 | 4 T12 | 120V | 96" | Slimline |
| F-I496-277 | 4 T12 | 277V | 96" | Slimline |
| F-I496HO | 4 T12 | 120V-277V | 96" | HO |