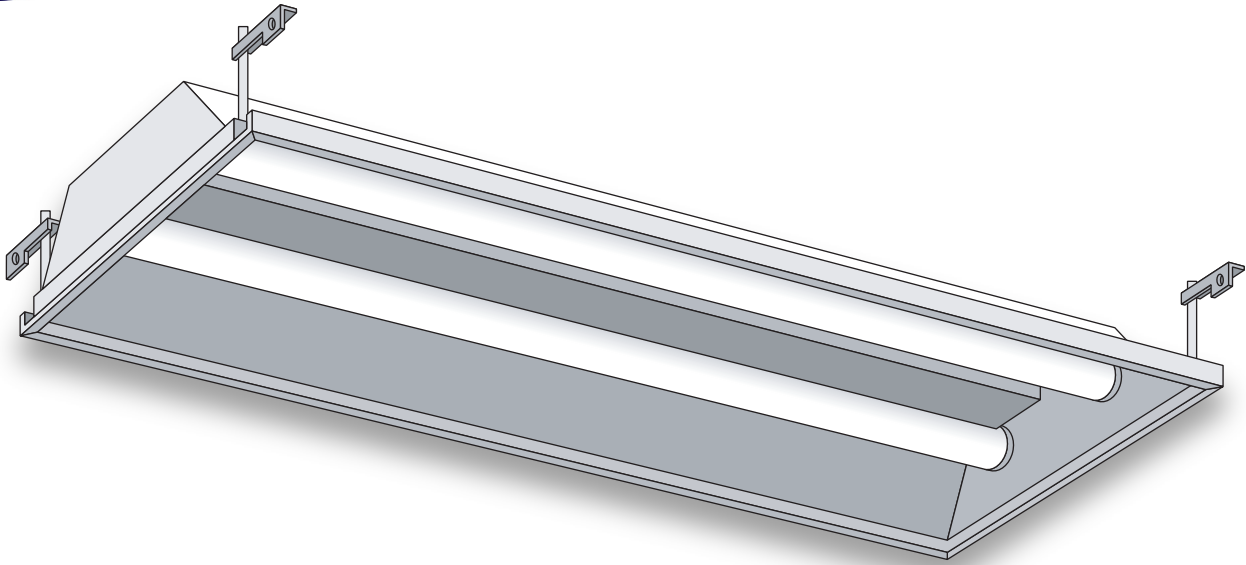




LIGHTING FIXTURE MFG.

1x4 Flange



GENERAL DESCRIPTION

A flanged troffer for use with prismatic lenses or celled louvers in concealed Z-bar ceilings. The body is the same shape for 1x2 and 1x4.

SPECIFICATIONS

Housing: Die-formed standard or 20-gauge steel, embossed for maximum rigidity and provided with four corner tie points for safety wire supports.

Ends: Snap into housing and secure with a #8" x 3/8" screw or 1/8" pop rivets with 1/8" to 3/16" grip (not included). Same ends fit 1x2 and 1x4 fixtures.

End Trim: Extends over the ends and snaps into side flanges on housing.

Socket Plate: Snap-in type, available in 1, 2, 3 T8 or T12 lamps. Sockets are tilted forward to provide positive spring action contact with lamps. Same socket plates fit 1 x 2 and 1 x 4.

Ballast Cover: Snaps in without tools for easy installation.

Access Plate: Snaps in for simple ballast lead hook-up without removing door or ballast cover.

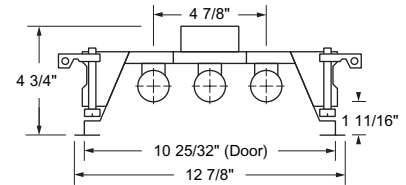
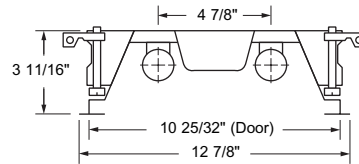
Door Frame: Available in flush steel. Hinges on end from either side of housing and is secured by a rotary cam latch (sold separately). See separate listing for door specifications.

Leveling Lug Assembly: Leveling lugs (4 included) attach to each corner of body to fasten housing to concealed Z-bar ceilings.

Finish: White polyester polymer with a minimum of 82% reflectivity.

Diffusers (not included): Prismatic lenses and all types of louvers will easily fit door frame. See separate listing on door specifications.

Lamps: 1, 2 or 3 T8 or T12 lamps.



NOTES

Dimensions subject to change without notice.

| Catalog No. | Lamps | Voltage | Bulb | Type |
|-----------------|-------|---------|------|-----------|
| LIF14-240 | 2 T12 | 120V | F34 | Plain |
| LIF14-240-277 | 2 T12 | 277V | F34 | Plain |
| LIF14-240LW | 2 T12 | 120V | F34 | Lamp-Whip |
| LIF14-240LW-277 | 2 T12 | 277V | F34 | Lamp-Whip |