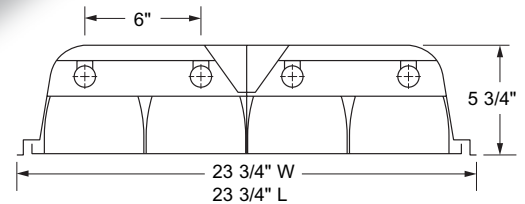
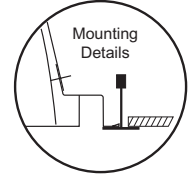
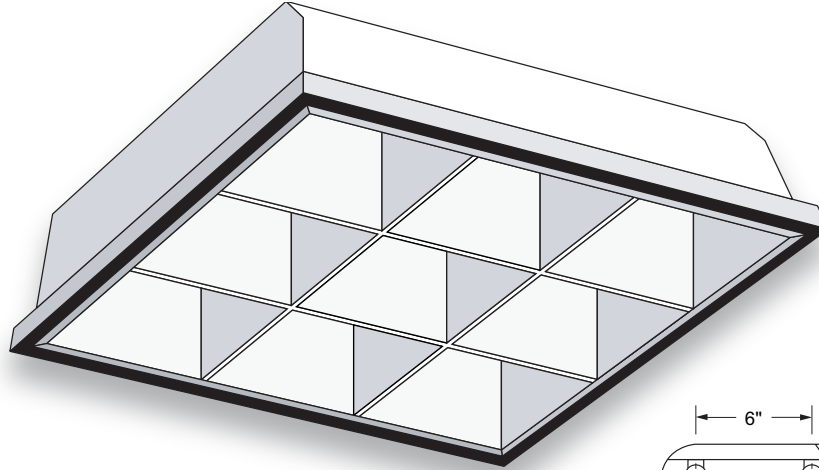




LIGHTING FIXTURE MFG.

2x2 Parabolic



GENERAL DESCRIPTION

A high performance recessed 2 x 2 troffer for nominal 3" deep parabolic louvers. Designed for installation in exposed T-bar ceilings.

SPECIFICATIONS

Housing: 5- 3/4" deep standard 23-gauge or 20-gauge cold rolled steel to meet New York City specifications, with rolled side flanges for safety. Side flanges attach to parabolic body with rivets (not included). Provided with four corner tie points for safety-wire supports.

Ends: Snap into housing and attach to parabolic body and side flanges with rivets (not included). Built-in earthquake clips attach fixture to grid. Same ends fit 2 x 2 and 2 x 4 fixtures.

Socket Plate: Snap-in mounting style. Sockets are tilted forward to provide positive spring action contact with the lamps. Same socket plates fit 2 x 2 and 2 x 4 fixtures.

NOTES

Dimensions subject to change without notice.

Ballast Cover: Snaps in without tools for easy installation.

Access Plate: Snaps in for simple ballast lead hook-up without removing ballast cover.

Finish: White polyester polymer with a minimum of 82% reflectivity.

Catalog No.	Lamps	Voltage	Bulb	Type
LIP22-320	3 T12	120V	F20	Plain
LIP22-320LW	3 T12	120V	F20	Lamp-Whip
LIP22-U40	2 T12	120V	U Bend	Plain
LIP22-U40-277	2 T12	277V	U Bend	Plain
LIP22-U40LW	2 T12	120V	U Bend	Lamp-Whip
LIP22-U40LW-277	2 T12	277V	U Bend	Lamp-Whip
LIP22-U40LW-DL	2 T12 (Daylite)	120V	U Bend	Lamp-Whip
LIP22-U40LW-EMG	2 T12 (Emergency)	120V	U Bend	Lamp-Whip
LIP22-U40LW-277-EMG	2 T12 (Emergency)	277V	U Bend	Lamp-Whip